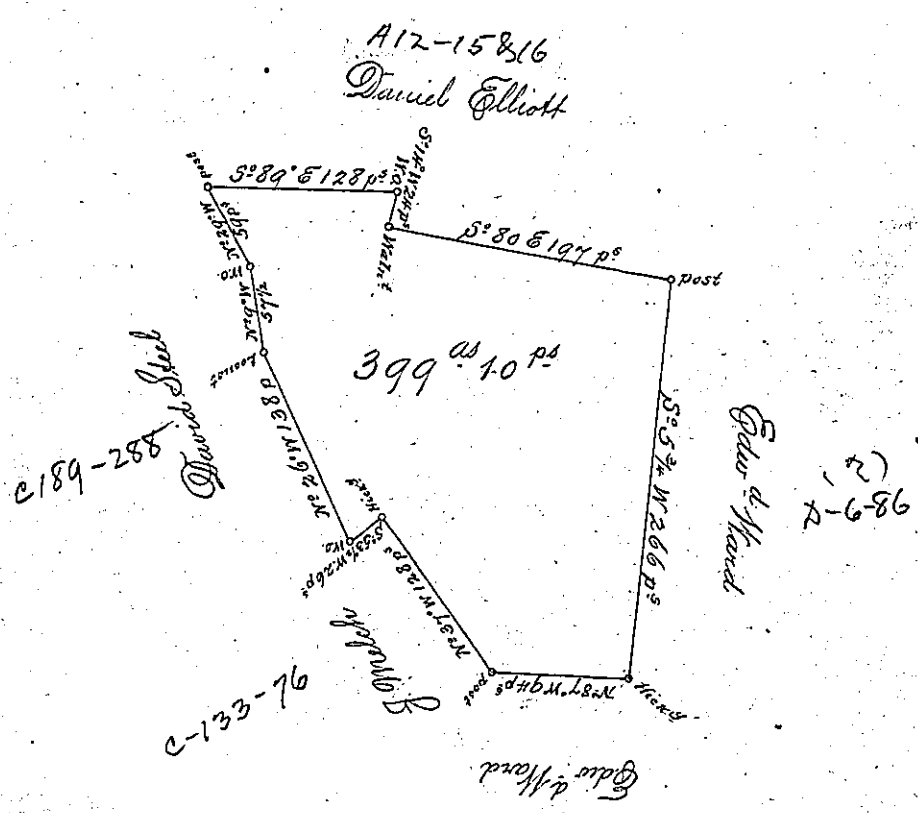


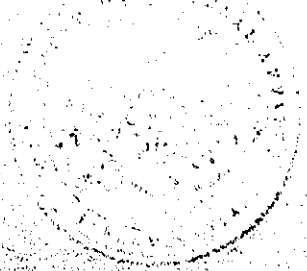
Note: a Survey was made on this Certificate for Jas Kerns August 1st 1785 but having discovered more Land he requested this survey to be made the Return of which he wishes to substitute in the Place of the one already in the office



A Draught of a Survey called _____ situate on the Waters of Saw Mill Run in Washington County, contain^g 399 ac 10 ps. Strict Measures, executed Feb^y 28th 1788 for Jas Kerns App^{ty} of Hugh O'Hara in consequence of a Certif^{ic} for 400 ac granted to said O'Hara by the Commis^{rs} appointed by Virg^a to adjust the Claims to unpatented Lands in the Counties Monong^a York^a & Ohio & duly entered &c. Ent^d 2 Mar 80 & ret^d 24 Mar 88

Jas Lukens Esq. S. Gent. Presley Nevill } D. fs.
 Matthew Ritchie }

IN TESTIMONY that the above is a copy of the original remaining on file in the Department of Internal Affairs of Pennsylvania, made conformably to an Act of Assembly approved the 16th day of February, 1833, I have hereunto set my Hand and caused the Seal of said Department to be affixed at Harrisburg, this



third day of March 1893

James W. Latta
 Secretary of Internal Affairs